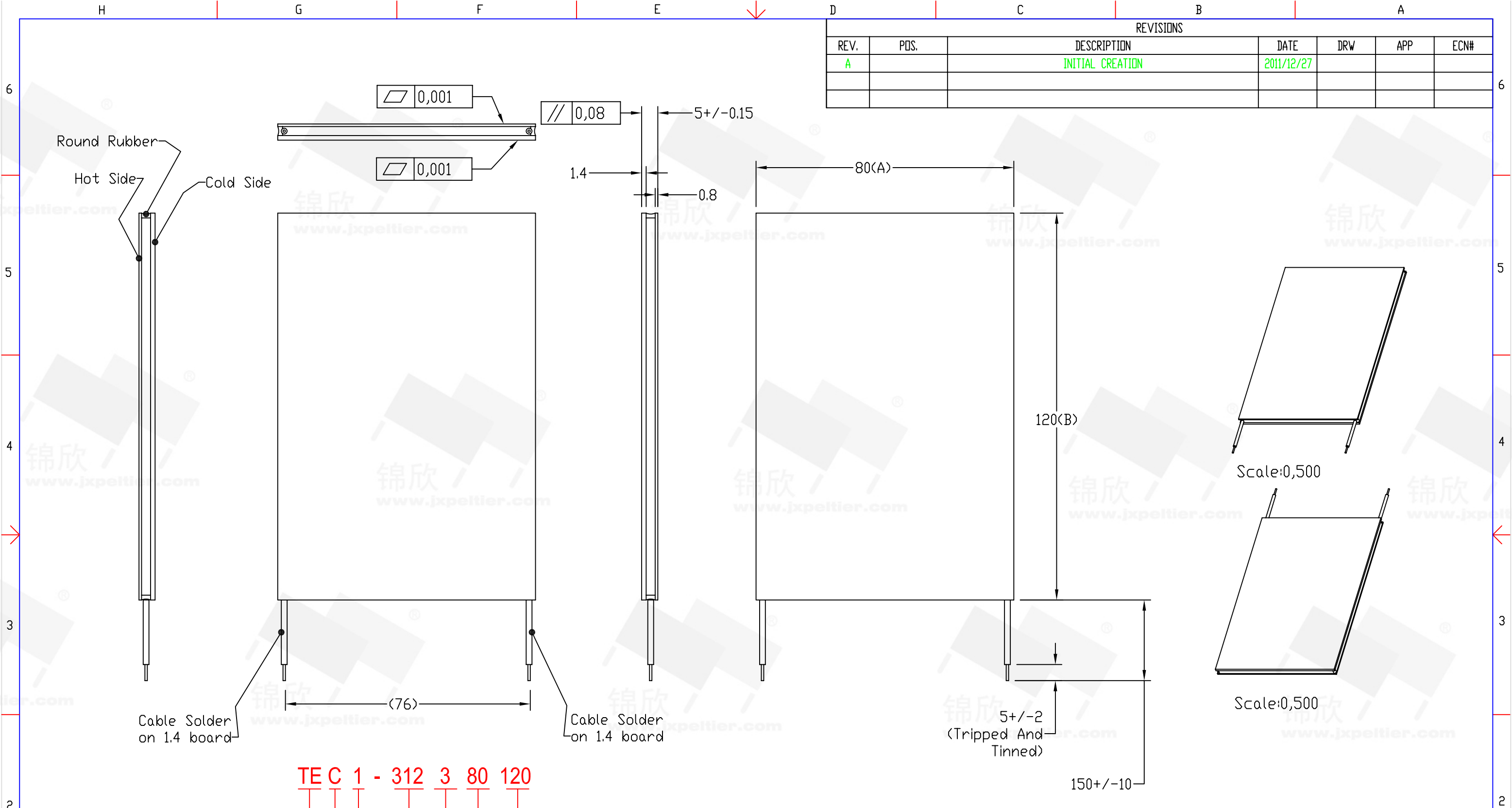


REVISIONS						
REV.	POS.	DESCRIPTION	DATE	DRW	APP	ECN#
A		INITIAL CREATION	2011/12/27			



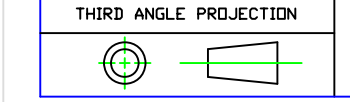
TEC 1 - 312 3 80 120

热电致冷组件代号  
陶瓷结构式  
电堆级数  
电堆对数 (1.2\*3.0平方)  
最大电流30A  
A向尺寸  
B向尺寸

序号	型号	电堆数	最大电流	最大电压	最大冷量(W)	最大温差(°C)	外形尺寸(MM)			电阻	重量
ITEM	PART NUMBER	COUPLES	A (MAX)	V (MAX)	室温环境TH=27°		A	B	H 实物为准	Ω	g
1	TEC1-312380120	312	30	35.2	950	68	80	120	5	--	--

1. UNLESS OTHERWISE SPECIFIED, DIMENSIONS ARE MM 2. TOLERANCE ARE AS FOLLOWS: 0 < X < 2 ± 0.06 2 < X < 10 ± 0.08 10 < X < 50 ± 0.12 50 < X < 100 ± 0.16 100 < X < 200 ± 0.20 200 < X < 300 ± 0.30 ANGLES ± 0.5°	Part NO.	TEC1-312380120	DESCRIPTION	35.2V(Max)/30A(Max)/312对P&N高敏粒子/0.8mm长150mm引线			
	SIGNATURE	DATE	锦欣制冷 (苏州) 有限公司 JXPeltier (SUZHOU) CO., LTD Tel/Fax: +86-512-62539286 Mobile: +86-18061938176 emailto: jxpeltier@gmail.com http://www.jxpeltier.com				
	DRAWN BY	GARY					2011/12/27
	CHECKED BY						
ENGR	APPROVED BY		CAD MDDLE: TEC1-312380120.prt	SCALE: 1:1	REV: A		
MATERIAL:	ISSUED BY		CAD DWG: TEC1-312380120.dwg	SIZE: A3	SHEET: 1 OF 1		

\*DO NOT SCALE DRAWING



THIS DRAWING AND THE DATA DISCLOSED HEREIN OR HEREWITH IS NOT TO BE REPR ODUCE  
USED OR DISCLOSED OR IN PART TO ANYONE WITHOUT THE PERMISSION OF JXPeltier (SUZHOU)  
CO., LTD.